

OVERVIEW OF DAMAGE IN KIBERA & HURUMA ESTATES FOLLOWING POST-ELECTION VIOLENCE - NAIROBI, KENYA

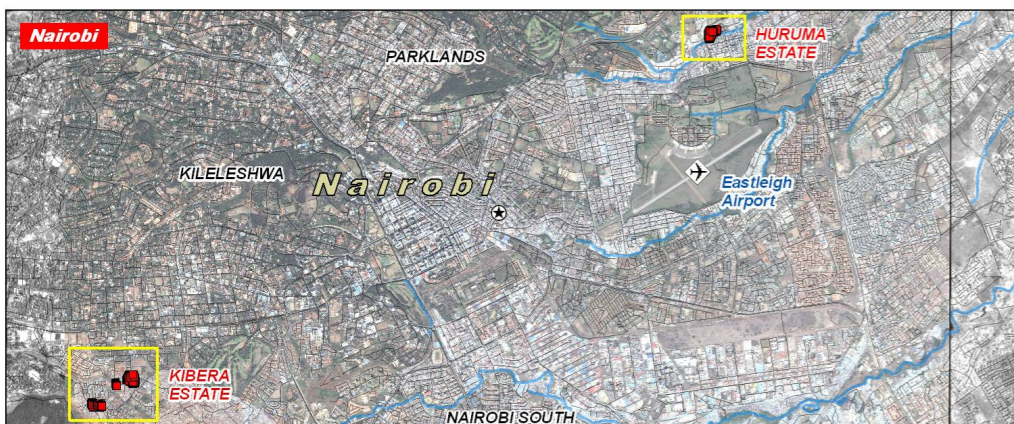
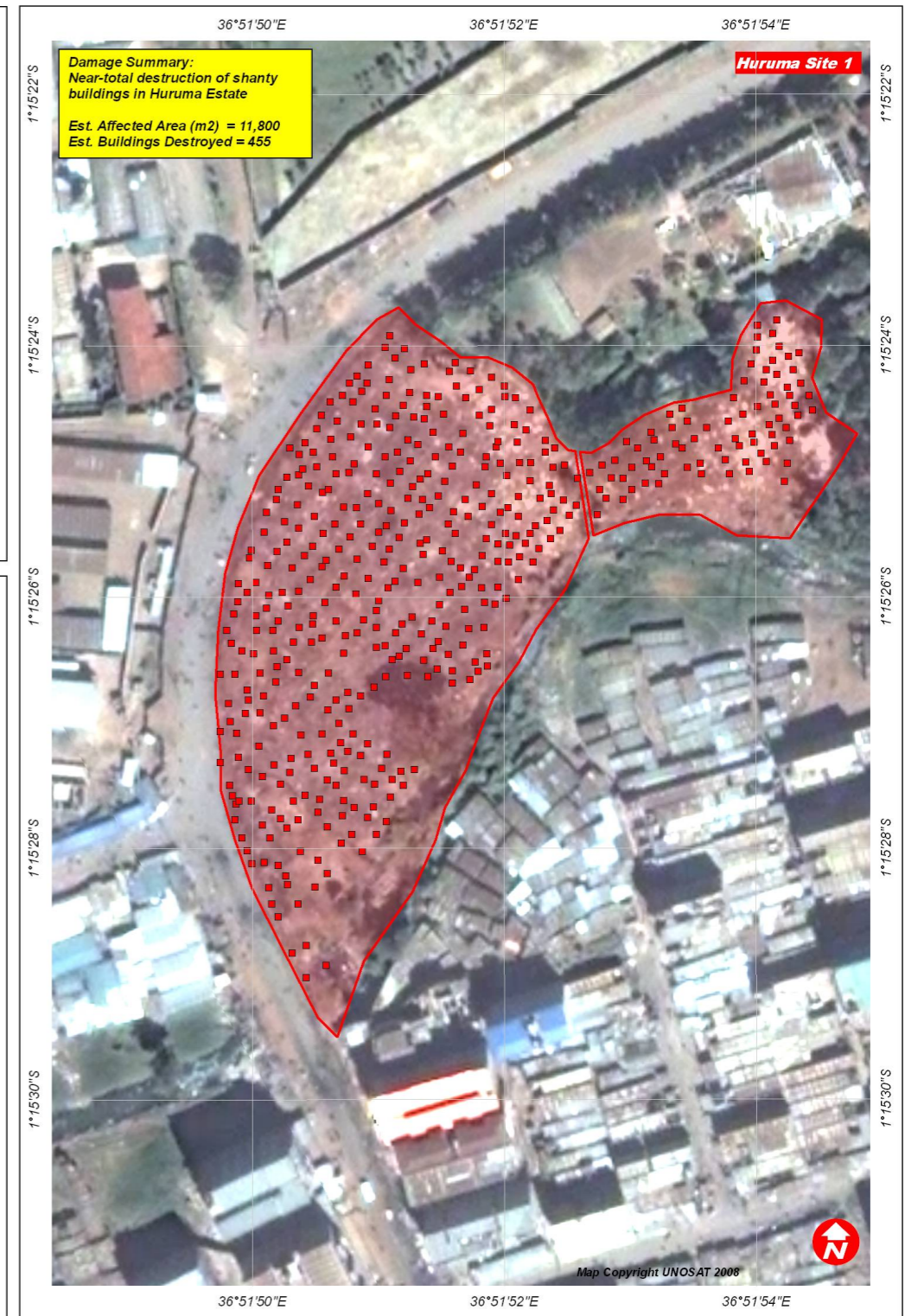
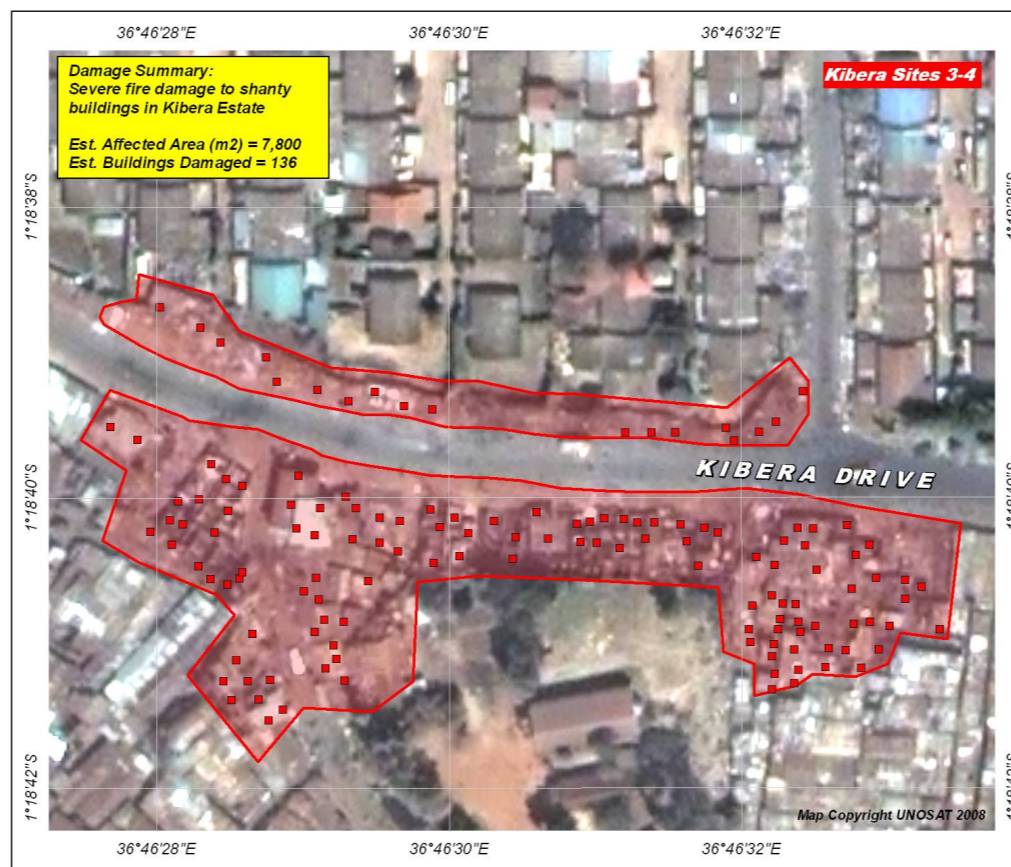
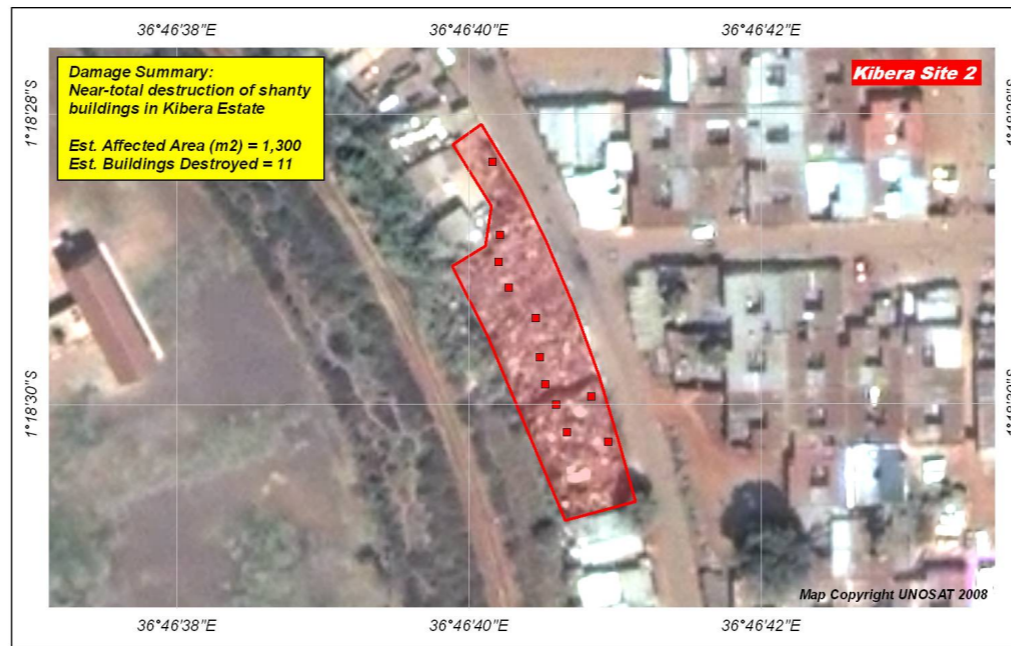
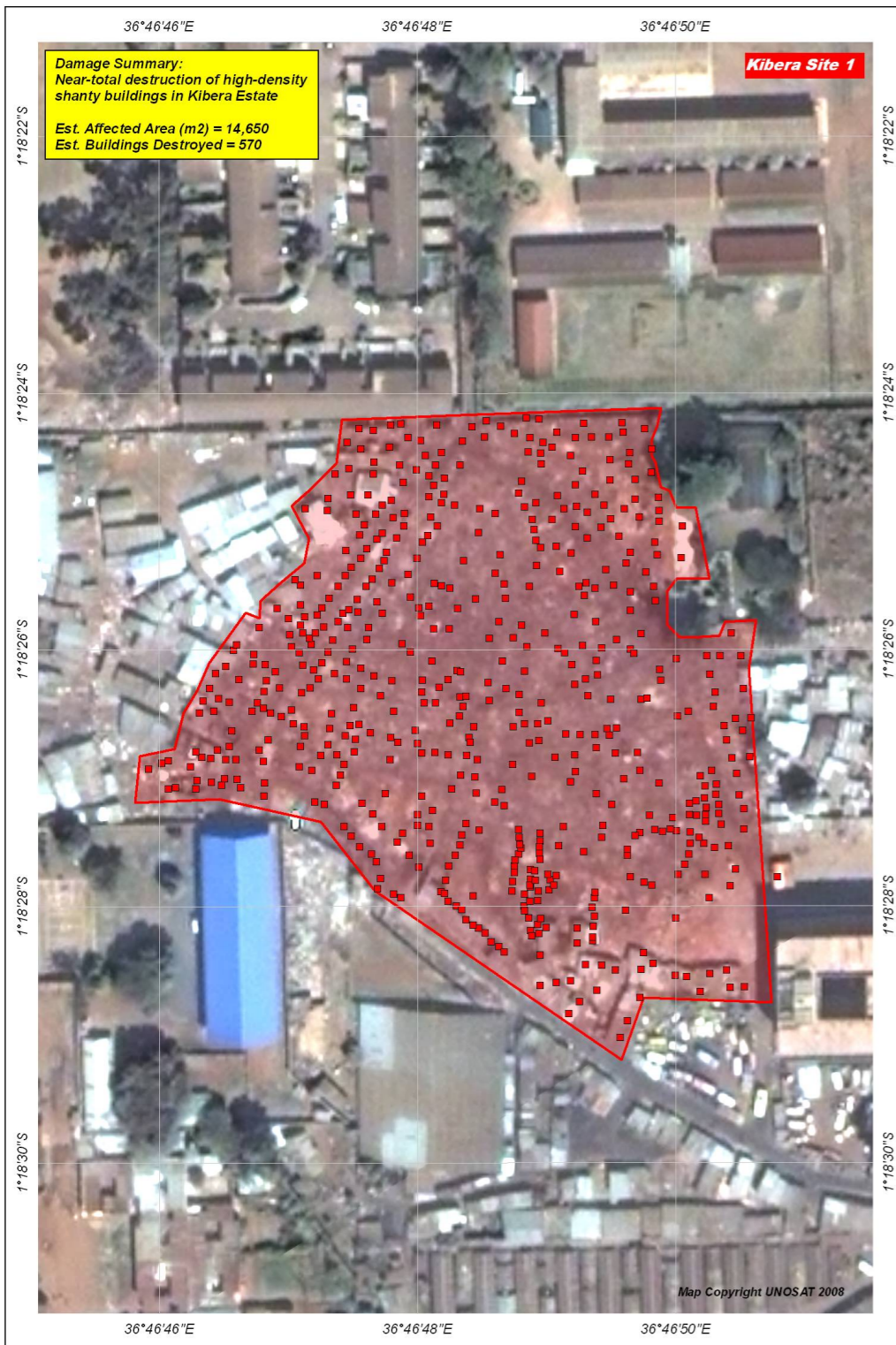
Satellite Damage Analysis with
Quickbird-2 Imagery Recorded 7
January 2008 & Formosat-2 Imagery
Recorded on 9 January 2008

Fire and Civil Conflict 23 January 2008



Version 1.1

Glide No: CE-2008-000001-KEN



Map Description & Legend

This map provides an overview of the satellite-detected damage sites in Kibera & Huruma Estates that resulted from the post-election violence in Nairobi, Kenya. The damage analysis has been done by image-interpretation, using QuickBird-2 imagery recorded on 7 January 2008 and Formosat-2 imagery recorded on 9 January 2008. Additionally, QuickBird imagery from Google Earth was used for reference. The approximate number of buildings likely destroyed or severely damaged have been identified and marked on the images for each damage site location. This image-derived building count is likely to be an underestimate of the actual number of affected buildings because of the highly compact and irregular construction within the shanty estates. These results have not yet been validated in the field and are subject to revision. Please send additions/corrections to the contact information below.

The depiction and use of boundaries, geographic names and related data shown here are not warranted to be error-free nor do they imply official endorsement or acceptance by the United Nations. This map was produced by the United Nations Institute for Training and Research (UNITAR) Operational Satellite Applications Program (UNOSAT). UNOSAT provides satellite imagery and related geographic information to UN humanitarian and development agencies and their implementing partners.

Legend:

- Damaged / Destroyed Building Site
- Undamaged Buildings
- Water Body
- Vegetation & Bare Soil

Map Information

Satellite Data (1) QuickBird-2
Resolution (1) 60 cm
Date Series 7 Jan. 2008
Image Copyright Digital Globe (2008)
Satellite Data (2) Formosat-2
Resolution (2) 2.0m (Pansharpned)
Date Series 9 January 2008
Image Copyright NSPO (2008)
Damage Analysis UNOSAT
Road & Place Data Tracks4Africa & MadMappers
Other GIS Data NGA, WFP, UNJLC
Map Production UNOSAT (23 January 2008)
Projection UTM, Zone 37 South
Datum WGS 1984

Map Scale for A3: 1:1,600 (All overview maps are of same scale)
1 centimeter represents 16 meters

Yards: 0 10 20 40 60 80 100
Meters: 0 12.5 25 50 75 100

UNOSAT satellite solutions for all
Contact Information: info@unosat.org
24/7 Hotline: +41 76 487 4998
Web Address: www.unosat.org